

PART OF THE SE.1/4, OF SEC. 16, T.5N., R.1W., S.L.B. & M.
CROWN POINTE – PHASE II

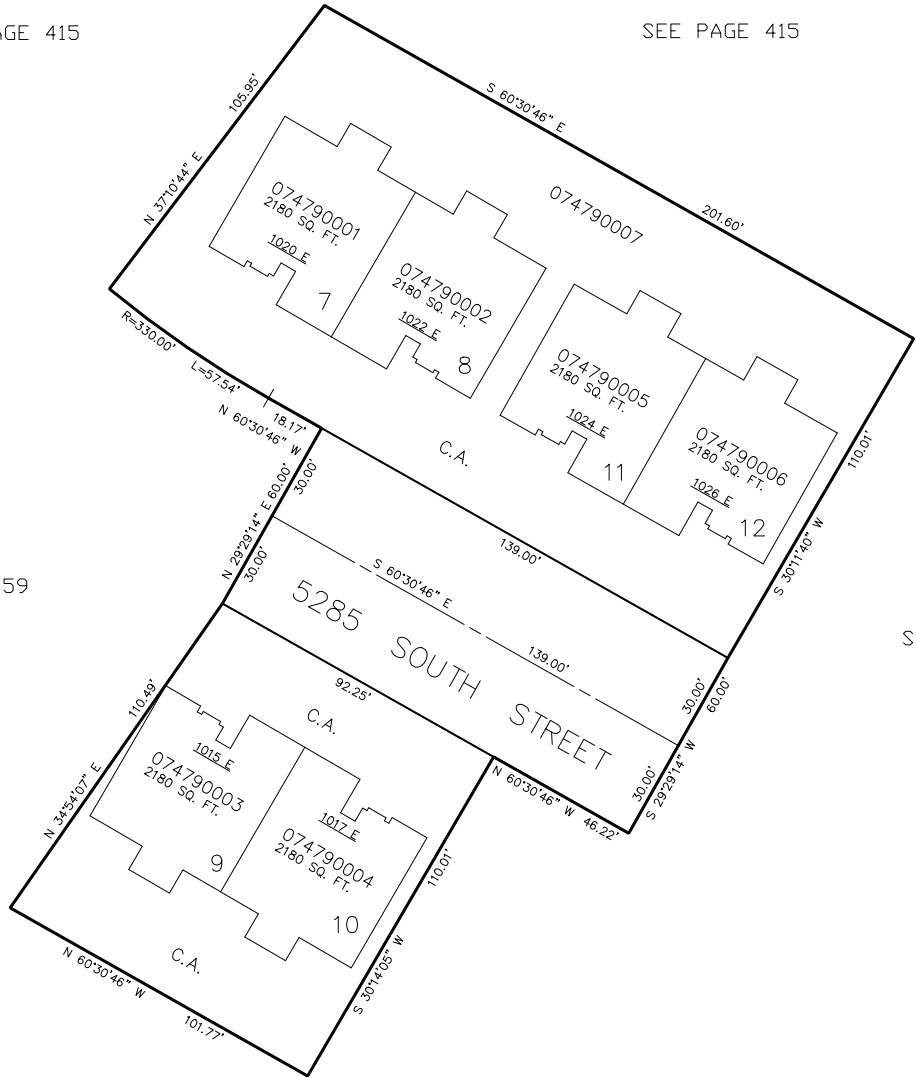
TAXING UNIT: 27
A P.R.U.D.
IN SOUTH OGDEN CITY
SCALE 1" = 30'

SEE PAGE 415

SEE PAGE 415

SEE PAGE 459

SEE PAGE 47



SEE PAGE 47

FOR COMPLETE ENG DATA SEE
ORIGINAL DEDICATION PLAT IN
BOOK 40, PAGE 50 OF RECORDS.